



A Gexpro Services Company | **Gexpro**
Services

ELECTRICAL LINE CARD

Gexpro Services delivers high-quality electrical components and solutions to power critical industries. Our extensive inventory and supply chain expertise ensure reliable access to essential electrical products that meet the highest standards of performance and safety. Whether you need wire and cable, circuit protection, enclosures, or custom electrical assemblies, we provide the right products to keep your operations running smoothly.

WIRE & CABLE SOLUTIONS

- Custom Cutting & Coiling
- Industrial Wire & Cord
- Control & Power Cable
- Specialty Cable & Fiber Optic Cable
- Cable & Harness Assemblies
- Custom Wire Harness Assemblies
- Wire & Cable Markers & Custom Labels
- Cable Ties & Cable Management

CONNECTIVITY & ELECTRICAL COMPONENTS

- Mechanical & Compression Lugs & Tooling
- Plugs, Connectors & Receptacles
- Relays, Switches & Wiring Devices
- Connector & Splices
- Printed Circuit Boards (PCBs)

LIGHTING & POWER SOLUTIONS

- Industrial & Commercial Light Fixtures
- LED Fixtures & Retrofitting
- Emergency & Exit Lighting
- Portable Power Distribution
- Battery Backups & UPS Systems

POWER DISTRIBUTION & CIRCUIT PROTECTION

- Breakers & Fuses
- Fuse & Fuse Block Holders
- Grounding Products
- Transformers & Power Supplies
- Panelboards & Switchgear
- Terminal Blocks

ENCLOSURES & CABLE MANAGEMENT

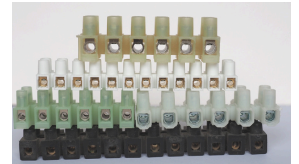
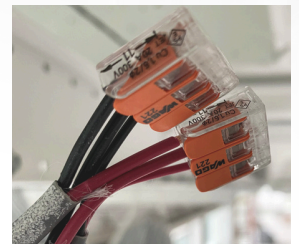
- Electrical Enclosures & Junction Boxes (Custom & Standard: Stainless Steel, Fiberglass, Steel)
- Cable Tray, Strut, Conduit, Channel, & Raceway
- Conduit Fittings

INSULATING & SPECIALTY MATERIALS

- Fiberglass Reinforced Plastic
- GP03, G10FR4, NOMEX (Sheet Material & Per Print)
- Standoffs & Insulators
- Tapes (Packaging, Filament, Heat Absorption)
- Insulating Materials
- Shielding (EMI)

ELECTRICAL COMPONENTS & CONTROLS

- Brushes
- Motor Controls & Drives (VFDs, Soft Starters)
- Power Relays & Contactors
- Sensors & Automation Components (Proximity Sensors, Limit Switches, etc.)
- Solenoids & Actuators
- Timers & Counters
- Power Monitoring & Meters



Gexpro Services

9500 North Royal Lane, Suite 130 Irving, TX 75063

Electrical Technical Sales Leader Larry O'Connor Jr: loconnor@gexproservices.com

Electrical Integration Technical Sales Leader: Brian Palmer: bpalmer@gexproservices.com





A Gexpro Services Company | **Gexpro**
Services

ELECTRICAL LINE CARD

EXPERT-DRIVEN ENHANCEMENTS

CUSTOM ENGINEERING & MANUFACTURING SOLUTIONS

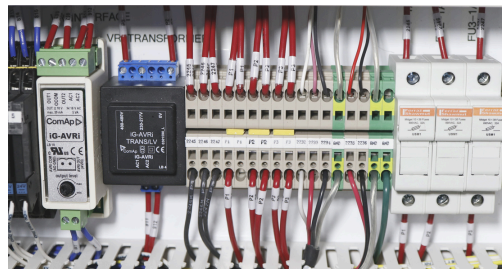
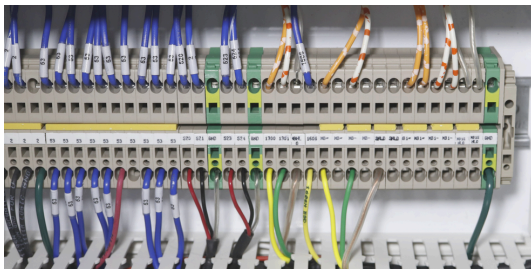
- **Custom Wire Harness Assemblies** – Designed for seamless integration
- **Printed Circuit Board (PCB) Customization** – Optimized for efficiency and reliability
- **Enclosure & Junction Box Modifications** – Custom sizes, materials, and configurations

ADVANCED MATERIAL ENHANCEMENTS

- **Corrosion-Resistant Coatings** – Extend component life in harsh environments
- **Heat-Resistant & High-Temperature Insulation** – Improved thermal performance
- **EMI/RFI Shielding Solutions** – Minimize interference for sensitive electronics
- **High-Performance Tapes & Adhesives** – Specialty solutions for extreme conditions

ELECTRICAL SYSTEM OPTIMIZATION

- **Power Quality & Surge Protection Solutions** – Minimize downtime and equipment damage
- **Energy-Efficient Components** – Reduce consumption and operating costs
- **Smart Monitoring & Automation Integration** – Improve system intelligence and control
- **Custom Kitting & Packaging** – Streamline inventory and supply chain logistics



OUR ELECTRICAL TECHNICAL EXPERTISE TEAM

With over 40 years of experience, our Technical Expertise Advisors provide industry-leading support to help customers select the right electrical components, improve system performance, and develop custom solutions. Whether you're optimizing power distribution, enhancing automation, or ensuring compliance with industry standards, our team is ready to assist with tailored recommendations and engineering expertise.



Gexpro Services

9500 North Royal Lane, Suite 130 Irving, TX 75063

Electrical Technical Sales Leader Larry O'Connor Jr: loconnor@gexproservices.com

Electrical Integration Technical Sales Leader: Brian Palmer: bpalmer@gexproservices.com

